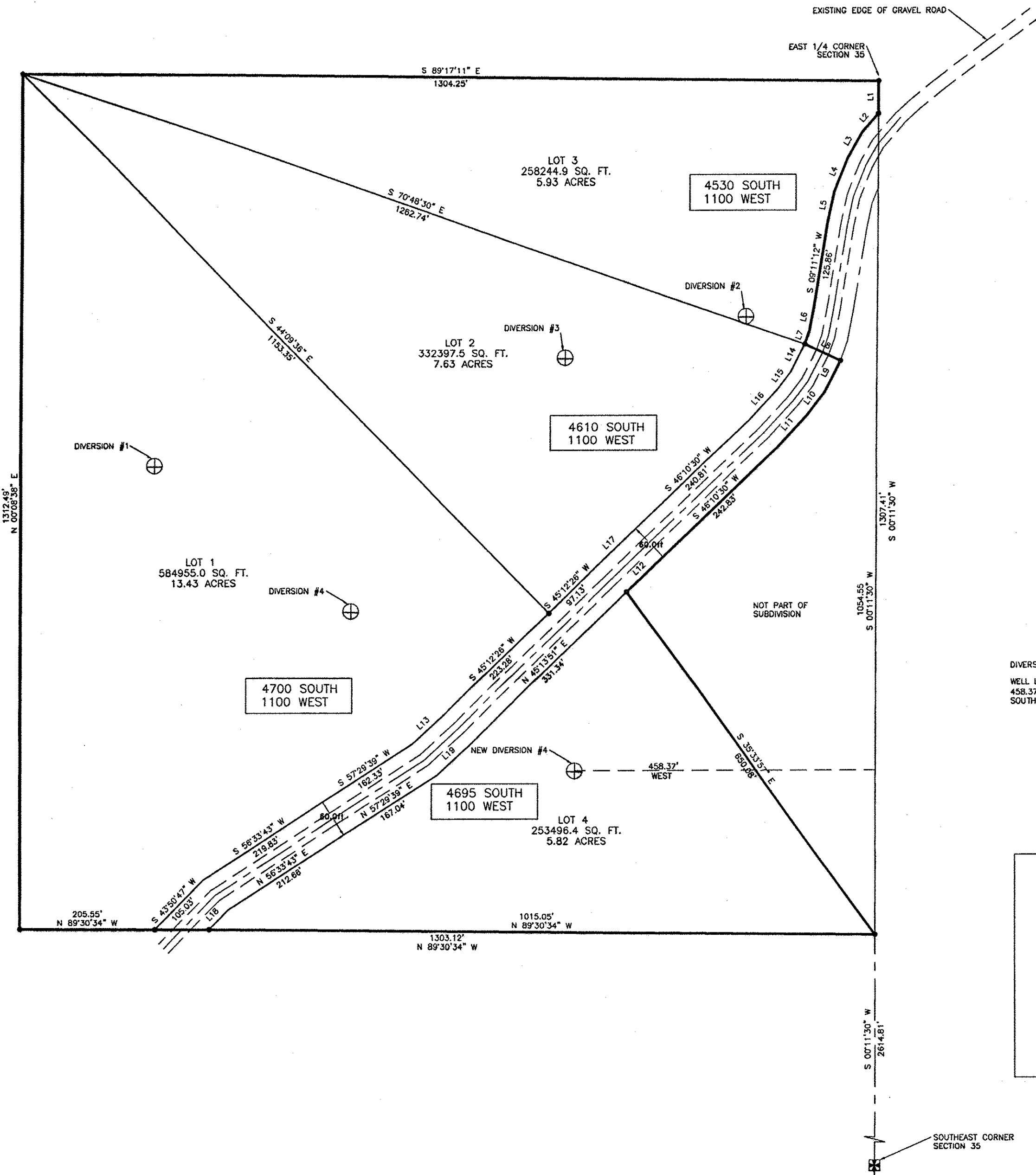
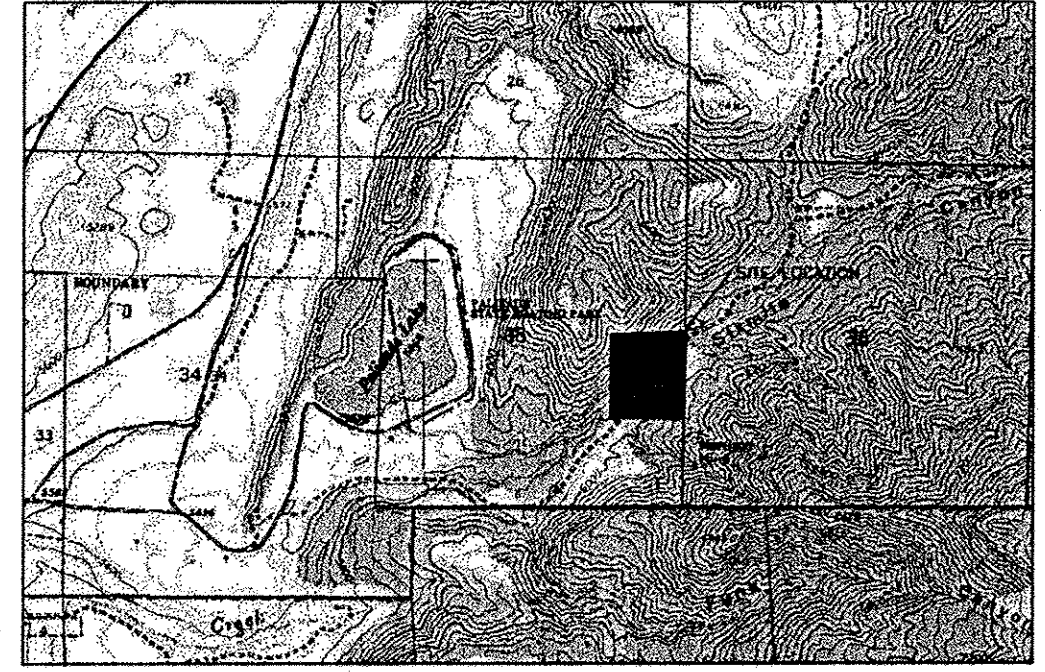
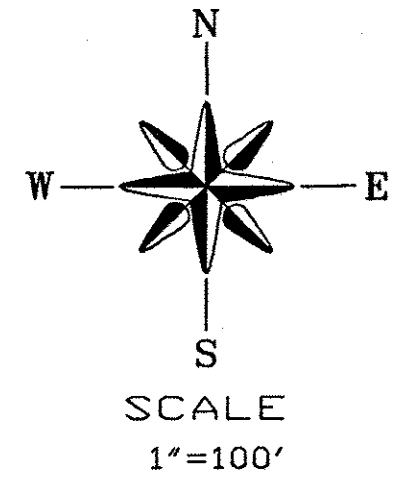


CREEKSIDE SUBDIVISION

VICINITY MAP



LINE	BEARING	DISTANCE
L1	S 00°11'30" W	50.81'
L2	S 40°42'35" W	38.95'
L3	S 29°14'35" W	43.51'
L4	S 22°01'29" W	54.74'
L5	S 12°10'08" W	47.41'
L6	S 10°36'38" W	40.29'
L7	S 18°54'02" W	20.74'
L8	S 64°52'22" E	60.36'
L9	S 26°37'09" W	54.37'
L10	S 36°42'43" W	41.28'
L11	S 42°08'25" W	68.38'
L12	S 45°59'15" W	77.10'
L13	S 47°35'17" W	67.31'
L14	S 26°12'52" W	47.51'
L15	S 36°42'43" W	33.12'
L16	S 42°08'25" W	63.42'
L17	S 45°59'15" W	87.70'
L18	N 43°50'47" E	41.70'
L19	N 47°35'17" E	73.75'



LEGEND

- = SET 5/8" IRON PIN W/CAP
- ◆ = MONUMENTED SECTION CORNER
- ◇ = UNMONUMENTED SECTION CORNER
- ⊕ = HIGHWAY R.O.W. MARKER
- ✕ = FENCE LINE
- = SUBDIVISION BOUNDARY
- = SECTION LINE
- - - = HIGHWAY RIGHT OF WAY
- = POWER LINE

DIVERSION #4 LOCATION

WELL LOCATED AT A POINT WHICH IS SOUTH 1054.55 FEET AND WEST 458.37 FEET FROM THE EAST 1/4 CORNER OF SECTION 35, TOWNSHIP 18 SOUTH, RANGE 2 EAST, SALT LAKE BASE AND MERIDIAN.

WELL RIGHT NUMBER 63-4460
CHANGE APPLICATION NO. A29887

WATER RIGHT HAS 4 POINTS OF DIVERSION

- 1) SOUTH 600 FEET AND WEST 1100 FEET FROM THE EAST 1/4 CORNER - SECTION 35, T.18S., R.2E., S.L.B.& M.
- 2) SOUTH 360 FEET AND WEST 200 FEET FROM THE EAST 1/4 CORNER - SECTION 35, T.18S., R.2E., S.L.B.& M.
- 3) SOUTH 425 FEET AND WEST 475 FEET FROM THE EAST 1/4 CORNER - SECTION 35, T.18S., R.2E., S.L.B.& M.
- 4) SOUTH 755 FEET AND WEST 800 FEET FROM THE EAST 1/4 CORNER - SECTION 35, T.18S., R.2E., S.L.B.& M.